

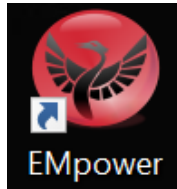


# EMpower Activation Manual

<b>Start EMpower .....</b>	<b>2</b>
<b>Complete the information .....</b>	<b>3</b>
<b>Recommendation .....</b>	<b>4</b>
<b>Error messages .....</b>	<b>5</b>

## 1. Start EMpower

- Click the EMpower shortcut icon (Windows / Mac Operating System)



- In Linux, run the empower.sh script in the EMpower installation directory
- The text "Unlicensed" will appear at the bottom of the EMpower window



## 2. Click on the *Manage* button

3. The following window will appear if your EMpower copy is not licensed yet. Complete the information in the form.

**EMpower has not been activated.**

To activate EMpower:

1. Enter your first and last names in their respective fields below, along with your email address, company name, country.
2. Enter the Activation Code found on the license card provided by Phoenix.
  - Note that this is a one-time use code and cannot be reused on other computers.
3. Click the License button to send the provided information and if successful a confirmation message will appear.

[Click here to open the detailed activation guide](#)

First name

Last name

E-mail address

Company name

Country

Activation code  -  -  -

- o Enter the '**Activation Code**' (from the license activation card)

4. After typing the activation code correctly, the icon changes from



Activation code  -  -  -



### Recommendation:

Write the Computer Name on the back of the card using a permanent marker.



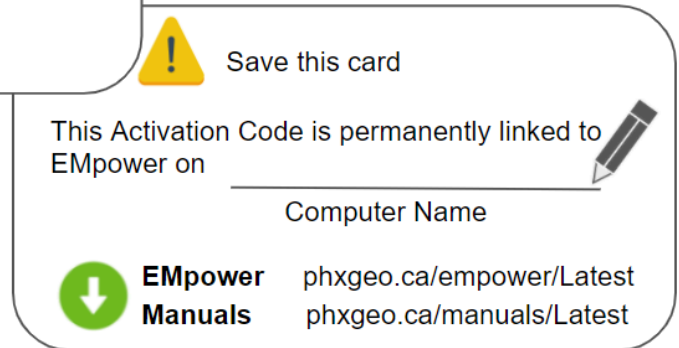
### Remember:

Keep the EMpower license card in a safe place, this information will be necessary if you need to re-install EMpower in the future.

### Front



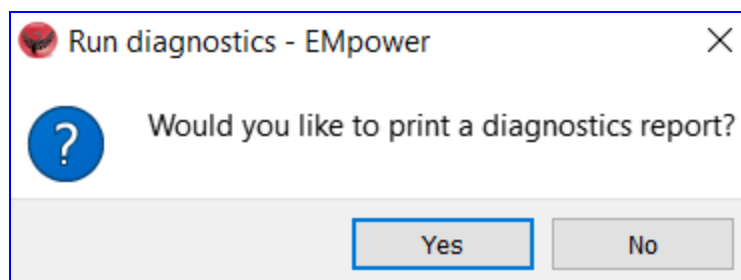
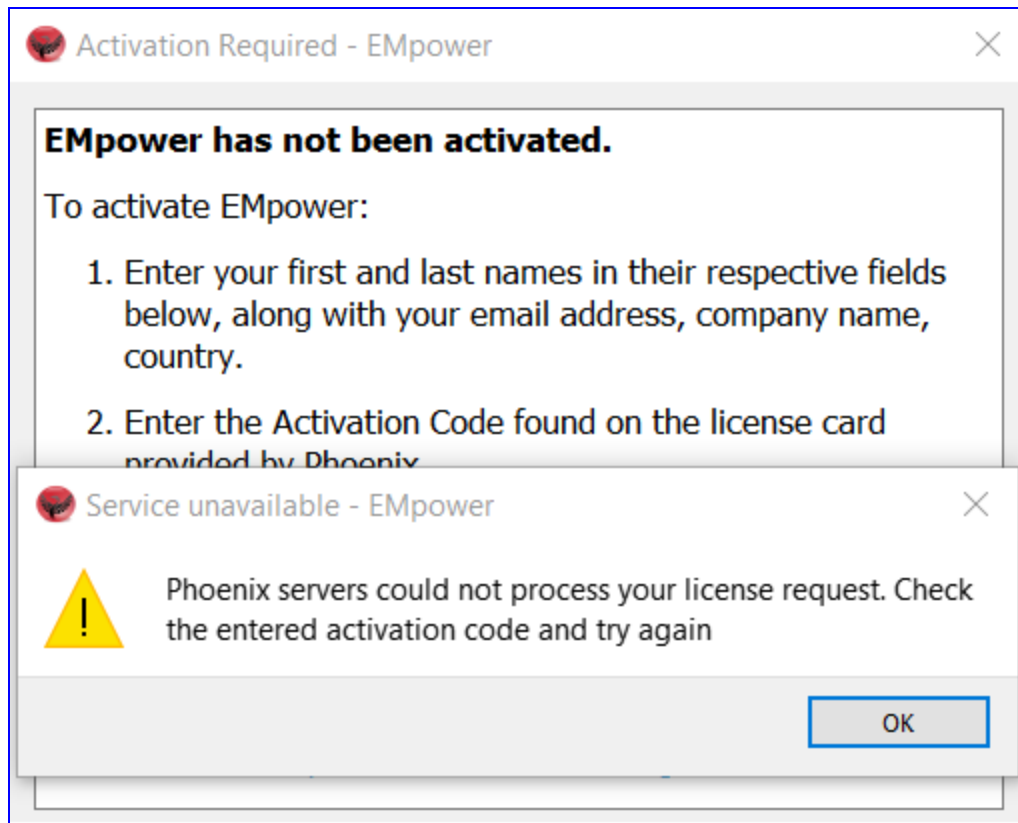
### Back



*Transferring the EMpower license to another computer is not supported.*

## 5. Error messages

If one of the following error messages are shown, check the internet connection and try again



Please check out the [FAQs](https://phoenixgeophysics.freshdesk.com/) <https://phoenixgeophysics.freshdesk.com/>  
Or email us at: [support@phoenix-geophysics.com](mailto:support@phoenix-geophysics.com)